



*Turning 21 in 2011*

**Finnish Cultural Institute in New York**

Promoting Art, Design and Architecture

## Finnish Cultural Institute in New York

### DIRECTOR

Leena-Majja Rossi

### BOARD

#### Chairman

Artist, Photographer Raakel Kuukka (STS)

#### Vice Chairman

Architect Aki Davidsson (SAFA)

#### Members

Interior Architect Sari Anttonen (Ornamo)

Artist Marja Kanervo, Deputy Member (STS)

Industrial Designer Jorma Pitkonen, Deputy Member (Ornamo)

Architect Tiina Valpola, Deputy Member (SAFA)

STS = Artists' Association of Finland

Ornamo = Finnish Association of Designers

SAFA = Finnish Association of Architects

### ADVISORY BOARD

#### In Finland:

Martti Ahtisaari	Eero Miettinen
Päivi Bergroth	Jaakko Numminen
Mikko Heikkinen	Paul Osipow
Helena Hyvönen	Kirsti Paakkanen
Jaakko Iloniemi	Juhani Pallasmaa
Hannu Kähönen	Maija Tanninen-Mattila
Antti Lassila	Markku Valkonen

#### In the US:

Richard A. Anderman	Jack Lenor Larsen
Richard Berglund	Peter MacKeith
Kenneth Frampton	Peter Reed
Edward P. Gallagher	Tucker Viemeister
Alanna Heiss	Susan Weil
Karl Katz	Tod Williams
Kati Korpjaakko	Stuart Wrede



**IN ITS 21 YEARS OF EXISTENCE**, The Finnish Cultural Institute in New York has not only come of age, but has also established itself as a promoter of visual arts, design, and architecture in North America, as well as a facilitator of contacts between Finnish and American artists and arts organizations in these fields.

From the beginning the artist-in-residency program has been a central aspect of the Institute's work. Over the years some six hundred Finnish artists have had the opportunity to work, become inspired, and make contacts in New York. The current residencies are located on Bleecker Street in Manhattan and on Lorimer Street in Brooklyn. The program continues to thrive as we are launching our third residency in collaboration with the Alfred Kordelin Foundation. The new residency will offer the artists housing and studio space in Brooklyn for a period of six months each.

In addition to the residency program, the Institute plays an important role as a curator and producer of touring exhibitions organized in the United States. *Eero Saarinen: Shaping the Future* has been the most distinguished production of the last years. This touring exhibition collected almost 200,000 visitors during the years 2006–2010. *Newly Dawn: Emerging Finnish Architects* is one of the most recent exhibitions coordinated by the Institute. Upcoming projects include *Bodies, Borders, Crossings*, an exhibition of lens-based art, and the *New Finnish Design SCENARIOS* event, which is organized in collaboration with the Consulate General of Finland in New York and Design Forum Finland.

One of the Institute's constant aims is to develop networks between Finnish and North American artists and institutions in the field of visual arts. The Institute creates a platform for collaboration, so that individual Finnish and American artists, designers, architects and organizations can engage in and extend their mutual collaboration. This role of the Institute as a bridge builder is extremely important and would not be possible without a permanent foothold in the United States.

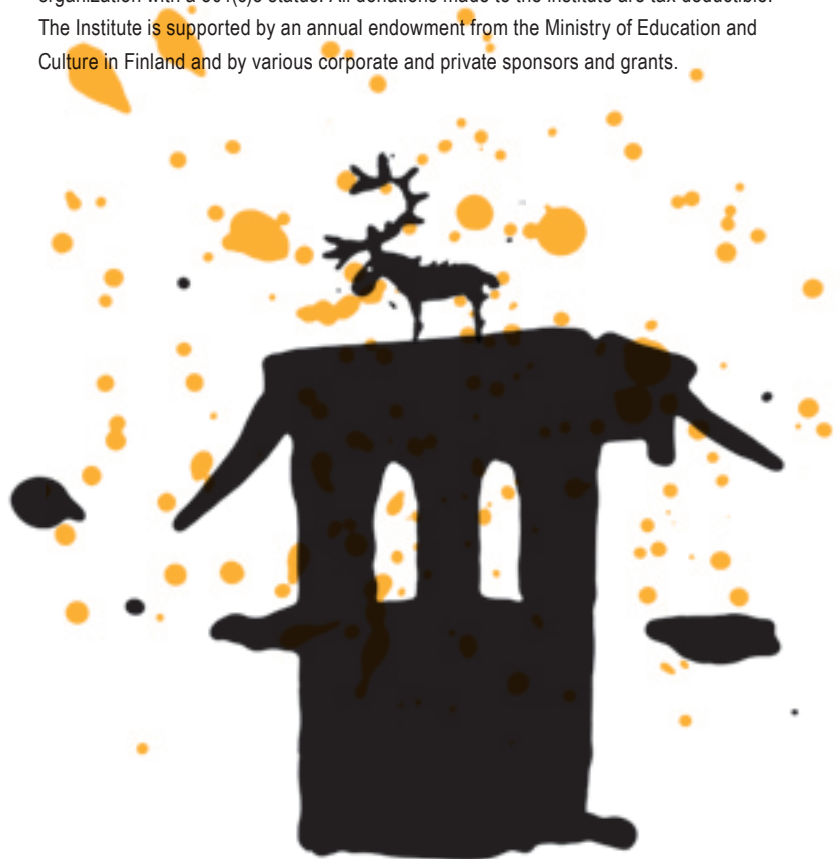
The 21-year-old Institute is ready for new opportunities and challenges in the new decade. We are thankful to the Ministry of Education and Culture in Finland for its support, as without it our operations would not be possible. I would like to extend our gratitude and appreciation to all of our other important benefactors: foundations, companies, and private donors, whose contributions have made our noteworthy touring exhibitions possible. This support will also be needed in the future to safeguard and develop our operations. In addition I would like to express my thanks to our dedicated staff members.

Raakel Kuukka

The Finnish Cultural Institute in New York was founded in 1990 by three Finnish artists' associations: STS (The Artists' Association of Finland), SAFA (Finnish Association of Architects) and ORNAMO (The Finnish Association of Designers). Until 2005 the name of the Institute was the Finnish Foundation for the Visual Arts. Based on its background the Institute aims to promote Finnish visual arts – art, design and architecture – in North America. In all its activity, the goal is to help create long-term collaborative relationships between Finnish and North-American professionals and organizations in the field of visual arts.

The Finnish Cultural Institute in New York is one of the 17 Finnish Cultural and Academic Institutes in Finland and abroad. It is a member of the EUNIC (European Union National Institutes for Culture) cluster in New York. In addition to an office in New York, the Institute maintains an office in Helsinki, Finland.

The Institute's field of activities covers all of North America. It is a not-for-profit private organization with a 501(c)3 status. All donations made to the institute are tax deductible. The Institute is supported by an annual endowment from the Ministry of Education and Culture in Finland and by various corporate and private sponsors and grants.



We have asked our current and two previous chairmen of the board to share their thoughts about the Institute with us.

How would you describe the Finnish Cultural Institute in 2011 compared to the earlier years? What has changed?

**Mikko Heikkinen:** The Institute has remained active in its operations. We are still enjoying the results of the large-scale Eero Saarinen exhibition that ended its tour in 2010. However, there are also some smaller new initiatives to promote young architects and designers.

**Rakel Kuukka:** During the last decade the Institute's activities have become more structured. Continuing both the residency program and the collaboration with Finnish and American institutions in conjunction with projects, exhibitions and other events, is important.

**Jorma Pitkonen:** A lot has changed. In the late 90's the Institute concentrated on running the artist-in-residency program. Since then, it has become an actual active cultural institution by producing and curating more exhibitions and events; by actively helping and guiding the artists participating in the residency program; and by working in close collaboration with local Finnish Consulates and Embassies. During the past decade the Institute has also managed to build a wide network with different US partners to support its exhibition production functions.

How are Finnish visual arts viewed in North America? What are the strengths and weaknesses?

**Heikkinen:** Famous, established artists, such as Aalto, Sarpaneva and Wirkkala will always remain important. However, it makes sense to create targeted campaigns in order to promote today's artists and designers.

**Pitkonen:** My assumption is that Finnish architecture, design and art are considered interesting. I feel that one of the strengths of Finnish art is its originality, its particular view of the surrounding world. On the other hand, uncertainty related to securing funding makes long-term planning difficult.

How has the Institute succeeded in promoting and marketing Finnish art, design and architecture?

**Heikkinen:** Considering the circumstances and the resources it has been successful. It would be unrealistic to expect large-scale breakthroughs. However, even basic visibility is crucial.

**Kuukka:** The design events and the Eero Saarinen exhibition have been the most successful. In addition, all the contacts between Finnish and American artists, architects and designers as well as arts organizations are important. Even a small thing can have long-term effects. The term marketing though is misleading – instead of focusing on individual marketing events, the Institute should create new platforms for networking and concentrate on facilitating long-term collaboration.

**Pitkonen:** It seems that its operations have created interest in the American media. The visitor numbers in exhibitions and design events have been remarkable.

The Institute produces, curates, and presents large-scale touring exhibitions in collaboration with local galleries and museums in North America. How do you see this role?

**Heikkinen:** This is probably the most important role. It would be almost impossible to coordinate bigger projects without being locally present and without being familiar with the special characteristics of the US.

**Kuukka:** High-quality exhibitions organized by the Institute are extremely important. The results always benefit from having the same people involved in the production process from the beginning. It is important that the personnel have expertise in the field of visual arts, even if they do not always curate the exhibitions themselves. It is also crucial to be able to evaluate both what is good quality art and what is of interest to the American public.

**Pitkonen:** The Institute would not function as effectively as it now does without this aspect of its operations nor would it be as beneficial for the Finnish art scene. The board, which consists of representatives of various organizations, supports the process.

What is the purpose of the residency program? Did the time you spent in one of the residences yourself have an impact on your career?

**Heikkinen:** The residency program supports the Institute's other activities. For me the one-month stay had a great significance. I am still continuing my work on the basis of the knowledge and experiences I received while in residency.

**Kuukka:** The residency program offers the artists the possibility to experience and to be influenced by the multicultural atmosphere and the arts scene in New York. It also enables one to build contacts with the locals in the field. For me the one-month stay in the residency program meant gaining experiences and seeing as much as I could. Taking note of the amount of art being delivered – not always the most interesting nor of the highest level

– made me raise my own standards. I figured that producing art only halfheartedly is not worthwhile. Every single piece has to qualify as the last work I might carry out.

**Pitkonen:** The residency program has significant value for the artists themselves. Even with a one-month stipend one has the opportunity to get acquainted with the field of arts in New York. I myself spent two periods in the residency program, once for one month and another time for two months. The latter period allowed me to work within the field of fine art. One of my works was later selected to the summer exhibition of the Finnish Institute in France as I visited the international residency program Cité des Arts in Paris. As a designer I have worked for the American company ViewSonic.

The Institute is about to launch a new residency program together with the Alfred Kordelin Foundation. What does it mean to the Institute?

**Heikkinen:** With the new residence we can bring more artists to New York. It also makes it possible to let the artists use the residences for longer periods at a time makes it possible to extend the individual residences. This has been a longtime goal of the Institute.

**Kuukka:** The new residency program is directed to painters, sculptors, photographers and media artists. It will give two artists a year the possibility to live and work in New York for a period of six months. The program includes a studio space in the ISCP International Studio & Curatorial Program where the artists-in-residence will have both a change to meet curators invited there and to network with other artists from abroad working at ISCP.

**Pitkonen:** It is very important. The new residence will give the artists the possibility to actually work in New York and to build networks to promote their art themselves.

In your opinion, how has the Institute succeeded in creating networks and collaborating with North American educational institutions and other organizations within the field of visual arts?

**Heikkinen:** A strong base has been created through collaboration with various exhibition projects and lecture events. There still is a lot to be done though.

**Pitkonen:** The recent project *Eero Saarinen: Shaping the Future* inspired significant and comprehensive research collaboration with North American universities and archives. There are many great opportunities and possibilities for that area to develop further and expand in the future.

How do you see the future for Finnish Cultural Institute in New York?

**Heikkinen:** I see the Institute as a necessary forum for cultural collaboration. I hope and believe that the Institute's resources will either remain at the current level or, better yet, grow.

**Kuukka:** It is full of opportunities. The future depends on the people working at the Institute and in the establishing organizations. The Institute needs sufficient funding. This will ensure that the Institute can continue its active work in producing events and exhibitions and in developing the residency program.

**Pitkonen:** The Institute will continue to be an innovative, independent specialist organization that both represents the Finnish visual arts in the US in a professional manner and creates new possibilities in the field.



Architect Mikko Heikkinen  
Institute's Artist in Residence in 1992; Board Member from 1995 to 2003;  
Chairman of the Board from 1998 to 2003; Senior Curatorial Advisor for the Institute's SAUMA exhibition from 2003 to 2009.



Artist Raakel Kuukka  
Institute's Artist in Residence in 2002;  
Board Member since 2004; Chairman of the Board since 2010.



Industrial Designer Jorma Pitkonen  
Institute's Artist in Residence in 1990 and 1995;  
Board Member since 2004; Chairman of the Board from 2007 to 2009.



## EXHIBITIONS, EVENTS AND OTHER PROJECTS

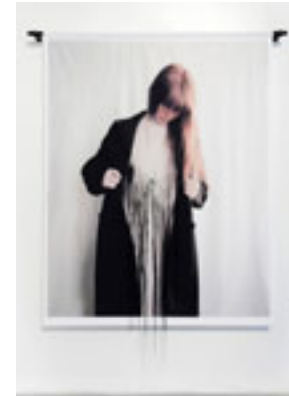
Since its founding in 1990, the Finnish Cultural Institute in New York has focused on visual arts in its exhibition activities. The Institute has an active role in promoting Finnish art, design and architecture in North America. It produces, curates and coordinates both large scale touring exhibitions and smaller events in collaboration with local galleries, museums, and other partners in North America and offers advice to Finnish artists who are looking to present their work in the US or in Canada.

Furthermore, the Institute publishes exhibition brochures, creates project websites, as well as organizes lectures and seminars in conjunction with the exhibition projects.

## ART

### Bodies, Borders, Crossings

2011–



Bodies, Borders, Crossings is an exhibition of contemporary Finnish photography and video art. It will start its tour in 2011. The exhibition is co-organized by the Finnish Cultural Institute in New York and the Finnish Institute in France. The curators are researcher Leena-Maija Rossi and photographer Kari Soinio.

Bodies, Borders, Crossings explores corporeality and control, borders and border crossings conceptualized in artworks by 11 artists in diverse ways on multiple levels. The artists are: Jaakko Heikkilä, Ulla Jokisalo, Raakel Kuukka, Riikka Kuoppala, Elena Näsänen, Marja Pirilä, Minna Rainio and Mark Roberts, Hannele Rantala, Catarina Ryöppy, and Minna Suoniemi.

Pirilä, Minna Rainio and Mark Roberts, Hannele Rantala, Catarina Ryöppy, and Minna Suoniemi.

The exhibition will tour in France, the United States, and Finland. All participating artists either are or have been based in Finland, but have also worked and/or exhibited their work in France or the US. One of the aims of the curators has been to find both cultural interfaces and eye-opening cultural differences in terms of thinking about borders and thinking through the body. Furthermore, the exhibition aims to contribute to the contemporary debate concerning the disappearance of some borders and the simultaneous enforcement and policing of others.

## Arctic Hysteria: New Art from Finland

2008



Arctic Hysteria: New Art from Finland was an intergenerational and interdisciplinary exhibition that featured 16 Finnish artists. It was held at the MoMA P.S.1 Contemporary Art Center, and was the biggest Finnish contemporary art exhibition produced in New York so far.

The exhibition introduced New York audiences to outlandish visions of aliens, utopias, animals, and psychedelia, with a selection of themes

from futuristic optimism inspired by new technologies to concern about the environment and the future of our planet. The works in the exhibition varied from sculptures, videos and drawings to photographs, recordings, installations and documents.

Arctic Hysteria was organized by P.S.1 Contemporary Art Center, Artists' Association of Finland, and FRAME Finnish Fund for Art Exchange, with the help of Consulate General of Finland in New York and Finnish Cultural Institute in New York. The exhibition was co-curated by Alanna Heiss and Marketta Seppälä.

The exhibition has since toured in Budapest, Hungary; Helsinki, Finland; Salamanca, Spain; and Vaasa, Finland.

## F2F: New Media Art from Finland

2000–2003



F2F: New Media Art from Finland was a groundbreaking media art exhibition presenting interactive artworks by the leading Finnish media artists. The interactive installations combined the most innovative uses of new technology of the time with sincere consideration for human sensibility in the age of technology. The artists experimented with such technical solutions as motion sensors and custom made electronics and software.

The exhibition explored three specific themes – the border between digital and analog expression; social interaction in the digital era; and new digital worlds.

F2F toured in North America in Los Angeles; Washington, DC; Toronto; Montreal; and New York. The exhibition completed its tour in Brussels in fall 2003. The artists featured were Laura Beloff and Max Decker; Andy Best and Merja Puustinen; Hanna Haaslahti; Juha Huuskonen; Marita Liulia; Teijo Pellinen & Co.; Kristian Simolin; Tuomo Tammenpää; and Heidi Tikka. The exhibition was curated by Marko Tandefelt and Bryn Jayes.

[www.f2fmedia.net](http://www.f2fmedia.net)

## Paper + Finland = Art

1998–2001



Paper + Finland = Art presented installations by internationally acclaimed Finnish artists working with paper as their medium. The featured works ranged from the delicate intimacy of paper jewelry to the forceful impact of imposing sculpture; from handmade paper pulp containing cotton, flax, and other natural substances to industrially produced and recycled papers.

The artists included were: Soili Arha, Leenakaisu Hattunen, Eija Isojärvi, Eeva-Liisa Isomaa, Kaarina Kaikkonen, Päivikki Kallio, Barbro Kulvik, Harri Leppänen, Jukka Mäkelä, Miika Nyysönen, Ritva Puotila, Irina Pätt, Anneli Sainio, Kai Rentola, Janna Syvänoja, Senja Vellonen, Karin Widnäs, and Merja Winqvist.

The exhibition was organized by the Finnish Cultural Institute in New York in collaboration with the American Crafts Museum. After its success in New York, the exhibition toured extensively in North American museums and galleries over a 4-year period.

## Art in-Between: Visions from Finland

1998

Art in-Between: Visions from Finland focused especially on paper and media arts. It was the visual arts component of the collaborative year long Finland – Europe Finessed campaign promoting Finnish culture and lifestyle in New York. The campaign celebrated both the 80<sup>th</sup> anniversary of Finland's independence and the centennial of Alvar Aalto and was built around the retrospective exhibition Alvar Aalto: Between Humanism and materialism organized by MoMA.

Art in-Between consisted of the touring exhibitions Paper + Art = Finland and Architecture in Between, as well as the following exhibitions and events coordinated and organized by the Institute and held in New York during spring 1998:

### Bonk Business Inc.



Bonk Business Inc. is a fictitious industrial company with more than one hundred years of history. It was initiated in 1988 by artist and graphic designer Alvar Gullichsen. After presenting its collection of machines, photographs and graphics in the Electrokinetic Gallery in New York the show continued its tour to the Embassy of Finland in Washington, DC, as well as to several venues in Europe.

### Experimental Documental – Films and Videos from Finland

Anthology Film Archives presented a selection of experimental short films by Finnish filmmakers and video artists. The event was organized in collaboration with Helsingin elokuvapaja, an artist run film producers' collective based in Helsinki.

### Gathering

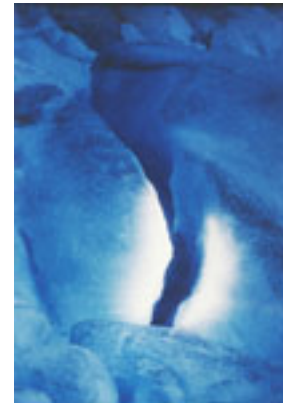


Gathering provided an insight into the world of Finnish paper art through the works of Eija Isojärvi and Kirsi Tiittanen at The Gallery at Dieu Donné Papermill in New York.

### Gazes – Media Art from Finland

Gazes was an intensive two day mediathon of Finnish Media Art held at the Kitchen Centre for Dance Music and Film in New York. The program included dance videos, animations, experimental video documentaries, and works on CD-Rom as well as in the Internet by leading Finnish media artists.

### Granny Pine



Granny Pine introduced a selection of photography and video works by the then up-and-coming young Finnish artists Veli Granö, Jari Haanperä, Tuovi Hippeläinen, Harri Larjosto, Jouko Lehtola, Pia Lindman, Teemu Mäki, Seppo Renvall, Alli Maria Savolainen, and Ilkka Juhani Takalo-Eskola. Key to the work in Granny pine was Alvar Aalto's visionary idea of 'a city in the forest'. The exhibition was presented at the Annika Sundvik Gallery in New York.

### Kain Tapper: Tombs in Wood

1994–1996



Tombs in Wood presented Kain Tapper's large-scale abstract wooden sculptures as well as drawings from the early 90s. The works on show were based on the artist's exploration of the theme of tombs and the use of wood in them in both ancient Etruria in Italy and in Finland. The exhibition had its opening at the Stuart Levy Fine Art Gallery in New York in 1994. After New York, it toured in Chicago and in Washington, DC.

The exhibition was organized by Kain Tapper in collaboration with the Finnish Cultural Institute in New York, the Consulate General of Finland in New York, the Embassy of Finland, and the participating venues: Stuart Levy Fine Art Gallery, and The Chicago Athenaeum, The Museum of Architecture and Design.

## Media Art Happenings

1994–2003



The Finnish Cultural Institute has been involved in organizing various new media art happenings in New York and elsewhere on the continent since 1994. The two biggest ones of these were the 3-day long PikseliÄHKY // pixelACHE Festival held in New York in June 2003, and an artist-in-residency project organized in Los Angeles with light and installation artist Jari Haanperä in 2000.

PixelACHE was organized together with Piknik Frequency and it consisted of international audiovisual performances, interactive cinema screenings and an exhibition of media art. After its presentation in New York, the festival continued its tour to Montreal, Canada.

The Los Angeles residency was realized in collaboration with EZTV, an independent electronic media art production company. The results of the residency were shown to public at an exhibition at the Los Angeles Contemporary Exhibitions, LACE Gallery in Hollywood.

## Solo Exhibitions

1990–1992

In the early years of its operation, the Finnish Cultural Institute in New York organized several solo exhibitions showcasing established contemporary Finnish artists. Artists such as Kristian Krokfors, Ossi Somma, Martti Aihla, Juhani Harri, Kimmo Kaivanto and Jarmo Mäkilä were presented to the North American audience through this series.

## DESIGN

### New Finnish Design SCENARIOS

May 2011



The event is part of an ongoing series presenting contemporary Finnish design in North America. The project was launched in 2007. Since then New Finnish Design events have been organized annually in Manhattan's Meatpacking District. The previous New Finnish Design events VALVOMO, HARDCORE, PLAYFUL and STRAIGHTFORWARD have each attracted over 5,000 visitors and a lot of interest both from the local and international media and companies from the design and business areas

during the annual Meatpacking District Design happenings and the International Contemporary Furniture Fair (ICFF).

The project aims to create a platform for participating designers and corporate partners for professional networking, as well as to offer them support in creating new business opportunities in the US.

The 2011 event New Finnish Design SCENARIOS is curated by interior architect Sari Anttonen and focuses on furniture, lighting and interior design and their development over the years. The product selection in the exhibition section concentrates on some of the main values in current Finnish design: sustainability, ethical thinking, and sensory reception.

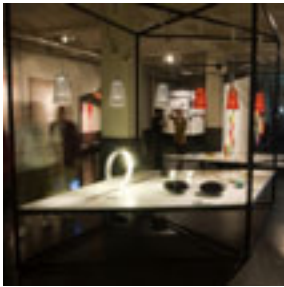
In the center of the SCENARIOS space is a student workshop that allows students from Helsinki and New York the opportunity to work with internationally known Finnish companies and designers in the fields of furniture and product design. The event space also includes a cafeteria, a pop-up store, and a lounge area that will feature lectures and other cultural programming.

SCENARIOS is organized by the Finnish Cultural Institute in New York and the Consulate General of Finland in New York, with the support of Design Forum Finland. It is an official satellite event of the international World Design Capital Helsinki 2012 project.



## STRAIGHTFORWARD New Finnish Design

May 2010



The STRAIGHTFORWARD New Finnish Design event was held at the Meatpacking District during New York design week. It presented innovative solutions to matters of everyday life by over 50 individual designers and design-oriented companies. The event focused on today's interpretations of the traditional values that made Finnish Design world famous sixty years ago.

The event consisted of an exhibition, a lounge area, a pop-up store, and a website. The theme was

further explored in a documentary film screened in the lounge and in a series of side events. The exhibition featured product design while the pop-up store offered a wider selection of smaller design objects from glassware to fashion and jewelry.

STRAIGHTFORWARD showcased young designers side by side with more established designers and design-oriented companies. The curators were industrial designer Paula Bello and interior architect Teemu Oksanen. The event was organized by Consulate General of Finland in New York and Finnish Cultural Institute in New York, with the support of Huippu Design Management.

[www.straightforward-design.net](http://www.straightforward-design.net)

## PLAYFUL New Finnish Design

May 2009



PLAYFUL New Finnish Design exhibited new innovations from Finland with a focus on play and creativity as elementary forces in human life. Through a playful approach, creative solutions can be found even to the most difficult challenges. Emphasizing quality of life, green solutions, and life-long learning, PLAYFUL presented a range of insightful solutions by forward-thinking designers and companies. The underlying themes – environment & innovation, and creativity & education – were highlighted by a series of events, a seminar and workshops for both adults and children.

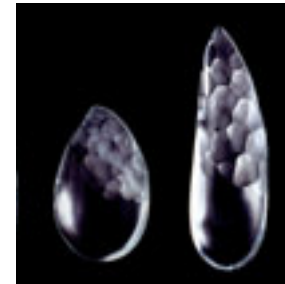
PLAYFUL boasted a wide array of design items and concepts from architecture and urban planning to furniture, fashion and video. It featured 20 individual designers and companies, as well as three comics artists, and was curated by interior architect Esa Vesmanen. The event was organized by Consulate General of Finland in New York, Design Forum Finland and Finnish Cultural Institute in New York.

Both the exhibition architecture and the visual image were bold, and stood out in the busy Meatpacking District. Gansevoort Plaza and nearby streets were invaded by eight ocean containers equipped with low energy lighting fixtures and display structures manufactured with recycled plastic. These mini-showrooms created an exciting and fun setting to present the designs.

[www.playfuldesign.net](http://www.playfuldesign.net)

## HARDCORE New Finnish Design

May 2008



HARDCORE showcased 25 individual design projects and concepts from Finland. The exhibition combined a curated selection of innovative concepts and projects realized by designers and design companies from Finland and a lounge hosted by major the Finnish design companies Iittala, Artek and Marimekko.

The goal was to define the essence of today's Finnish design. It gave a timely view on Finland's

unique design scene through the eyes of the curator of the exhibition, designer Ilkka Suppanen. The exhibition underlined the innovative and slightly extreme nature of Finnish design. The presented work focused on the essence of the specific design problems at hand in their particular context. The designs in the exhibition covered a broad range of design fields from graphic design to fashion and product design.

HARDCORE New Finnish Design was organized by Consulate General of Finland in New York, Design Forum Finland and Finnish Cultural Institute in New York in conjunction with Meatpacking District Design '08.

[www.hardcoredesign.net](http://www.hardcoredesign.net)

## VALVOMO New Finnish Design

May 2007



Valvomo, a Helsinki-based design collective founded in 1993, transformed an old fish locker building in the Meatpacking District into an extravagant design showcase displaying a selection of innovative furniture and lighting designs spanning the studio's fourteen year history. The exhibition was one of the main events of the Meatpacking District Design '07 and the U.S. debut for Valvomo.

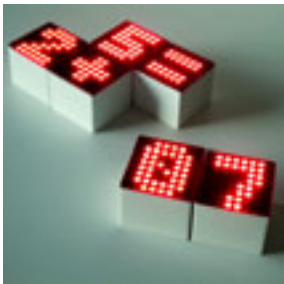
The design studio's first North American client, Los Angeles-based Peter Pepper Products, launched three products designed by Valvomo at the event. In addition to Valvomo's own designs the showcase included street fashion by CTRL Clothing and electronic music by DJs PJVM and Randy Barracuda. The then brand new Vice Guide to Helsinki was also distributed at the event.

The first New Finnish Design event was organized in collaboration with Design Forum Finland and the Finnish Cultural Institute in New York, with the support of the Consulate General of Finland in New York.

[www.valvomo.com/newyork2007](http://www.valvomo.com/newyork2007)

## SAUMA [Design as Cultural Interface]

2005–2009



SAUMA [Design as Cultural Interface] presented innovative contemporary design from Finland. The 24 works in the exhibition explored new approaches to usability, user experience and the design process itself. The exhibition was originally curated for the American audiences and was first presented in Washington, DC as part of the Finnish Design Year in 2005.

SAUMA introduced experimental installations and design concepts including new portable devices, an experimental kitchen, an urban sauna and a game prototype. Other exhibition items studied the ideas of portability, sensory experiences and the ways in which we navigate our urban environment. The exhibition was updated for each presentation.

After touring in the United States for three years, SAUMA was shipped to Europe where it was first presented at the Design Museum in Helsinki, Finland, then at the Danish Design Centre, Copenhagen, and finally at the Stavanger Kunstforening in Norway in summer 2009.

The exhibition curators were industrial designer, artist professor Hannu Kähkönen and Marko Tandefelt, professor of physical computing. Architect Mikko Heikkinen was senior curatorial advisor.

[www.saumadesign.net](http://www.saumadesign.net)

## New Faces in Finnish Design

2005



In 2005 the Institute organized a series of events in New York under the title New Faces in Finnish Design together with the Consulate General of Finland in New York, Marimekko, Iittala, Artek, the City of Helsinki, and the Finnish Tourist Board.

The month-long happening included a Finnish Design Month at MoMA, the launch of the New Scandinavian Design book at Scandinavia House, as well as press conferences and receptions. As part of the Finnish Design Year 2005, MoMA also declared May as Finnish Design Month in its retail stores.

The panel discussion held at the Scandinavia House focused on the role of young emerging design talent and a typically Finnish way of developing new ideas in loosely organized designer collectives. The participants were Kaisa Blomstedt, Donna Gorman, Alfredo Häberli, Ville Kokkonen, Harri Koskinen, Johan Olin, Saara Renvall, and Aamu Song. The discussion was moderated by design journalist Alanna Stang.

## ARCHITECTURE

### Newly Drawn – Emerging Finnish Architects

2010–



The exhibition Newly Drawn – Emerging Finnish Architects introduces the most interesting young, upcoming Finnish architects, their latest projects, visions and ways of working. The architectural offices included are Hollmén Reuter Sandman, Verstaas, NOW, Anttinen Oiva Architects, Lassila Hirvilammi, Avanto, ALA, AFKS and K2S. Most of these young offices have been founded after 2002.

Newly Drawn offers an easy access to architecture to the general public. The public gets to know the architects, the projects they are involved in, and their methods and sources of inspiration through video presentations and interviews. The designers lead the public to an architectural journey from sketches and office desks to construction sites and finally to the finished buildings.

Newly Drawn – Emerging Finnish Architects is a joint project by the participating practices. The Institute coordinates the exhibition tour in North America. The exhibition is accompanied by a website, a publication, leaflets and a series of lectures and workshops on contemporary Finnish architecture.

[www.newlydrawn.fi](http://www.newlydrawn.fi)

### Eero Saarinen: Shaping the Future

2006–2010

Eero Saarinen: Shaping the Future is a comprehensive, large scale, international project exploring the work of one of the most prolific, unorthodox, and controversial masters of 20th century architecture.

The Eero Saarinen project is organized by the Finnish Cultural Institute in New York, the Museum of Finnish Architecture, and the National Building Museum, with the support of the Yale University School of Architecture. The book was published by Yale University Press.



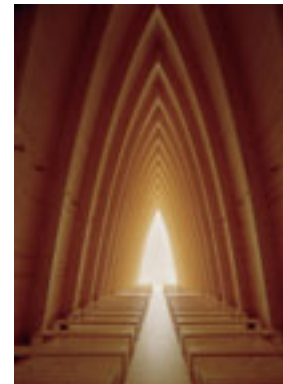
The project consists of three key components: exhibition, publication, and research database. It explores the architect's entire output of more than 50 built and proposed projects and serves to return Saarinen, more than four decades since his untimely death in 1961, to the center of architectural discourse.

The exhibition toured in Helsinki; Finland; Oslo, Norway; Brussels, Belgium; and in the US in Cranbrook; Washington, DC; Minneapolis; St. Louis; New York and New Haven. The next step after the conclusion of the tour is to open the research database to the general public.

[www.eerosaarinen.net](http://www.eerosaarinen.net)

### Architecture in Between

1998



Architecture in Between presented a selection of prize-winning projects from recent design and town planning competitions in Finland. The exhibition's two main objectives were to introduce the Finnish competition system to the American audience, and to present high-quality contemporary projects by Finnish architects, which embody the continuity of innovation and professionalism in Finnish architecture.

The exhibition included designs for a secluded chapel, projects for new Finnish embassies, and new building and landscape architecture projects in the central Töölö Bay area of Helsinki by up and coming Finnish architects.

Architecture in between was first presented in New York at the Architectural League and then toured around North America. Architect Kirsi Leiman curated the exhibition.

## Alvar Aalto Viipuri Library

1996–1998



Alvar Aalto's Viipuri Municipal Library is an internationally acclaimed masterpiece of functionalism. Aalto first won the public design competition for the Viipuri Municipal Library in 1927 with a classical proposal. However, by the time the construction work on the library finally began in 1934, the design had changed considerably. In its final form, the Viipuri Library is an early masterpiece of Aalto's humanistic architecture. Except for a short period after the Second World War, the library

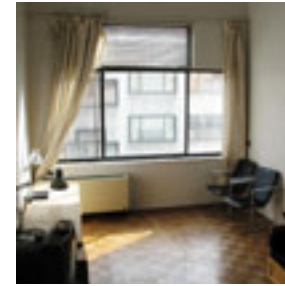
has continuously been used in its original function as the city's library in Vyborg, Russia.

In the exhibition the library was presented in its original form. The aim was to publicize the restoration project and to help collect funds for its realization.

The exhibition consisted of a scale model, enlarged original photographs and working drawings and written and pictorial documents. Examples of furniture used in the library were also shown and a touch of the original feeling of the library was achieved by using samples of the same materials as were used in the original interiors. The exhibition was accompanied by documentation of the post-war phases of the library, the restoration project, and the current situation of the repairs.

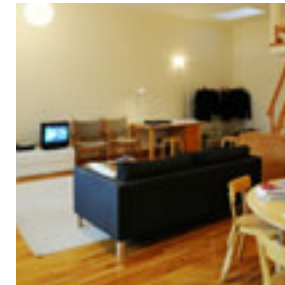
The exhibition started its tour in Jyväskylä, Finland in 1994 and toured in the United States from 1996 to 1998. It was organized by the Finnish Cultural Institute in New York, the Museum of Finnish Architecture, the Finnish Committee for the Restoration of Viipuri Library, and the Friends of Viipuri Library.

## ARTIST-IN-RESIDENCY PROGRAM



In addition to its exhibition activities, the Finnish Cultural Institute has been offering residencies for Finnish artists, designers and architects in New York City since 1990.

The Institute currently maintains two apartments for its artists-in-residence, one in Greenwich Village, NY, the other in Williamsburg, Brooklyn. Previously there have also been apartments in Manhattan's Upper East Side and TriBeCa.



Applications for participation in the program are accepted annually in April. The duration of the residency period can vary from one to six months.

The stipendiaries are chosen by a panel of experts in the field of visual arts through a highly competitive jurying process. During the past 20 years some 600 Finnish artists have had the opportunity to work and live in New York through the Institute's artist-in-residency program.

Starting from the beginning of 2012 the Institute will launch a new residency program in collaboration with the Alfred Kordelin Foundation. This program is specially tailored to meet the needs of Finnish painters, sculptors and photographers. It will allow the artists to stay in New York for a period of six months each. In addition to an apartment in Brooklyn, the program will provide them with a studio space at the International Studio & Curatorial Program.

ARTIST-IN-RESIDENCY STIPENDIARIES 1990–2011

1990

ORNAMO  
Eskola Lea  
Koski Reino  
Pitkonen Jorma  
Rahikainen Tuija  
Taiko group  
Taipale Irja  
Tamminen Olli  
Vuorinen Pirkko

SAFA  
Hassi Ville  
Jukola Päivi  
Laaksonen Esa  
Lepistö Jari  
Linko Jukka  
Nylen Marita

Rautiola Matti  
Soininen Pirjo  
Soininen Riitta

STS  
Hall Maria  
Hautala Jorma  
Hukkanen Reijo  
Isomaa Eeva-Liisa  
Juutilainen Kari  
Kaminen Marjukka  
Linnovaara Antti  
Sarasalo Marjatta  
Somma Ossi

1991

ORNAMO  
Berglund Kaarina  
Huhtamo Marketta  
Julin Jasmine  
Kosonen Markku  
Kähönen Matti  
Leinonen Anu  
Rahtu Sirpa  
Rintala Jukka  
Tuori-Luutonen Heli  
Taideteollisuusryhmä  
Konsti

SAFA  
Iso-Aho Jyrki  
Jormakka Kari  
Järvinen Jukka  
Järvinen Kari  
Kairamo Erkki  
Kareoja Pentti  
Kronlöf Juha  
Lahdelma Ilmari  
Mänttari Roy  
Ränköharju Tapio

Sopanen Pia Helena  
Vihinen Pauliina

STS  
Huhtamo Kari  
Kauppi Hannu  
Kurki Matti  
Kuuskoski Taina  
Kärki Ipi  
Pitkänen Tarja  
Rantanen Ulla  
Somma Ossi  
Ström Carl-Erik  
Uusitalo Kristiina  
Vihinen Reino  
Väätti Ilkka-Sakari

1992

STS  
Boucht Jouni  
Hakaniemi Elina  
Lindfors Stefan  
Mäkilä Jarmo  
Niemistö Asta  
Osipow Anna-Maria  
Pirtola Erkki  
Polaris Tarja  
Riikonen Hannu  
Utinen Marianna

ORNAMO  
Aaltonen Leena Marita  
Af Schulten Ben  
Aho Kirsti  
Halme Leena  
Inkinen Jari  
Kannel Tetta  
Nieminen Kari  
Ojala Reijo  
Palmujoki Liisa  
Pohjalainen Ritva-Liisa  
Pohjari os. Mustonen  
Maritta  
Puotila Ritva  
Väkevä Seppo

SAFA  
Aaltonen Markus  
Airas Timo  
Björklund Asta  
Heikkinen Mikko  
Hirsimäki Miikka  
Hägerström Sven-Håkan  
Ivonen Risto  
Kilpiö Eeva  
Lehtinen Markku  
Lahdelma Kenneth  
Mustonen Tarmo  
Nurmela Matti

Peltonen Kari  
Piha Pentti

1993

ORNAMO  
Aalto Riitta  
Aarras Anna-Maija  
Hietanen Eine  
Hietanen Pentti  
Leino Jouni  
Lukala Esa  
Mattsson Matti  
Pietäinen-Söderlund  
Marjukka  
Priha Päikki  
Saksela Piila  
Suominen Tuomo  
Taskinen Rita  
Turkka Yrjö

SAFA  
Hagan Harri  
Hintsanen Timo  
Jokela Kirsti  
Jokela Pekka  
Lammasniemi Reijo  
Mahlamäki Rainer  
Pakkala Pekka  
Rinne Antti  
Sarpaneva Pia  
Seppälä Anne-Leena  
Stenros Anne  
Tenhunen Max

STS

Best Andy  
Hautala Jorma  
Kauhanen Pekka  
Liulia Marita  
Luukela Annikki  
Nevalainen Pekka  
Siukonen Jyrki  
Virta Ulla  
Väisänen Hannu

1994

ORNAMO  
Falla Ritva  
Favén Aino  
Hattunen Leenakaisu  
Hiltunen Meeri  
Kellokumpu Ritva  
Lähteenkorva-Nakai  
Ursula  
Saarto Leena  
Salo Markku  
Soini Merita  
Weckman Olli

SAFA  
Adlercreutz Gunnel & Eric  
Ilonen Pia  
Jäämeri-Ruusuvuori Anna  
Kaipia Jouni  
Korkka Mauri  
Marila Risto  
Nisunen Petteri  
Papunen Yrjö  
Piironen Esa  
Sanaksenaho Matti  
Schalin Mona

STS  
Koivisto Kaisu  
Linnovaara Antti  
Mallander Jan-Olof  
Markuksela Eero  
Mäkilä Jarmo  
Roos Nina  
Tapper Kain  
Tiittanen Kirsi

1995

ORNAMO  
Donner Ariadna  
Inkinen Jari  
Kokkonen Eeva  
Koski Reino  
Lampela Raili  
Pitkonen Jorma  
Sandrén-Veijola Riitta  
Weckman Olli  
Lehtinen Petri

SAFA  
Freese Simo  
Kaarsalo Simo  
Kaartoluoma Virve  
Leiman Kirsi  
Peltonen Kari  
Seppänen Matti  
Suominen Jarmo  
Verhe Marianne

STS

Heino Timo  
Häkli Sirpa  
Larjosto Harri  
Luukela Annikki  
Mäki Teemu  
Niva Jussi

1996

ORNAMO  
Aaltonen Leena & Markus  
Björklund Susanna  
Hietanen Eine & Pentti

Ilonen Petra  
Klemettinen Maire  
Kukkasjärvi Irma  
Lepistö Kari  
Rista Ilona  
Turunen Riitta

SAFA  
Huttunen Hannu  
Jääskeläinen Päivi  
Lahtinen Reijo  
Lauhis Tapani  
Niskanen Aino  
Partanen Erkki &  
Kouvo Sinikka  
Suominen Jarmo

STS  
Aalto Johanna  
Beloff Laura  
Holmberg Marketta  
Hukkanen Reijo &  
Tuominen Sinikka  
Jylhä Pekka  
Mäki Teemu  
Niva Jussi  
Somma Ossi  
Tiisala Eeva &  
Keränen Markku

1997

ORNAMO  
Karhunen Anita  
Leimu Irja  
Renvall Seppo  
Lukala Esa  
Salo Heikki  
Syvänoja Janna  
Willman Lea  
Luukkonen Jyri-Petteri  
& Poijula Kaija &  
Salminen Liisa  
(project group)

SAFA  
Hautajärvi Hannu  
Leiman Kirsi  
Mattinen Maire  
Nisunen Petteri  
Pekkala-Koskela Eea  
Peltola Toni  
Vapaavuori Pekka

STS  
Bremer Stefan  
Lönnroos Bjarne  
Utinen Marianna  
Vuokola Marko  
Ytti Elsa

1998

ORNAMO  
Antikainen Tuomas  
Anttila Tapio  
Haavisto Anna-Riitta  
Koski Reino  
Klemettinen Maila  
Vikman Ulla-Maija

SAFA  
Aho Nieminen Anu  
Autio Teiju  
Blom Katarina  
Krokfors Karin  
Nurmi Tarja  
Seppälä Teemu  
Verhe Marianna  
Viiri Heikki

STS  
Ahtila Eija-Liisa  
Heikinaho Minna  
Kallio Päivikki  
Keitilä Antti  
Lucander Robert  
Niskanen Pekka  
Rönkkö Jaakko  
Vesterinen Pekka  
Vuokola Marko

1999

ORNAMO  
Anttonen Sari  
Ekström Britt-Marie  
Koski Kia  
Kääriäinen Pirjo &  
Kallio Jarkko  
Tuokko Riitta  
Vainio Lauri  
Viljakainen-Pailinna  
Liisa  
Väänänen Ana

SAFA  
Häkli Seppo  
Maula Jere  
Mustonen Tapani  
Mäki-Jyllilä Juha  
Niskanen Aino  
Ylinen Helena  
Solla Jaakob  
Velho Anneli

STS  
Granö Veli &  
Hippeläinen Tuovi  
Koivisto Kaisu  
Lucander Robert  
Kyyssönen Miika &  
Nuppulainen Hannele  
Pirilä Sirpa  
Rehor Petr

Saarto Leena  
Saloranta Elina  
Schroderus Kimmo  
Séraphin Lena

2000

ORNAMO  
Haavisto Anna-Riitta  
Harni Pekka  
Karjalainen Eija  
Raekallio Kirsti  
Rintala Jukka

SAFA  
Kilpinen Pia  
Kolhonen Pasi  
Nisunen Petteri  
Repo Tuomo  
Soini Kaisa  
Sopanen Marja

STS  
Jokisalo Ulla  
Kallio Päivikki  
Laakso Anni &  
Hagglund Bo  
Larjosto Harri  
Maasalo Mikko &  
Ziegler Denise

ORNAMO  
Paajanen Kari  
Rönkkö Riitta  
Sarvasalo Marjatta  
Somma Ossi  
Virtanen Petri

2001

ORNAMO  
Haavisto Anna-Riitta  
Kokkonen Riitta  
Leinonen Eija  
Linnamäki Sirpa &  
Pänkäläinen Pasi  
Luukkonen Jyri-Petteri  
Pohjalainen Ritva-Liisa  
Taskinen Ahti  
Vesmanen Esa

SAFA  
Jääskeläinen Päivi  
Miettinen Samuli  
Ruokanen Ria  
Schulman Sari

STS  
Heikkilä Jaakko  
Kaltamo Matti &  
Ryhänen Heli  
Krokfors Kristian  
Parikka Marja

2002

ORNAMO  
Ahonen Satu &  
Aromaa Arni  
Elovirta Arto  
Hiltunen Meeri &  
Nakai Ursula  
Immonen Risto  
Kosonen Krista  
Punkari Pirkko

SAFA  
Löfström Kaarina  
Huuhtanen Juha  
& Laitinen Ilkka &  
Metsähonkala Mikko  
(project group)  
Viherkoski Jari

STS  
Hiltunen Heli &  
Ryöppy Catarina  
Kanerva Marja  
Kuukka Raakel  
F2F exhibition group

2003

ORNAMO  
Arela Maija &  
Salomaa Tarja  
Sotamaa Kivi  
Lukala Esa

SAFA  
Blom Katarina  
Hoppu Salla  
Ilonen Juha  
Jaaksi Asmo  
Rautiola Matti  
Marila Sasu  
Hinkola Vesa

STS  
Ekström Saara  
Ferm Ulrika &  
Ångerman Maria  
Mazici Melek  
Närhinen Tuula  
Räbinä Paavo  
Niemelä Jaakko &  
Hietanen Helena  
Nyqvist Thomas

2004

ORNAMO  
Aalto Elina  
Ahtiainen Timo  
Lankinen Katriina &  
Gaal Miklos (STS)  
Ripatti Timo  
Ruokonen Nina

SAFA  
Hinkola Vesa  
Jaskanen Leena &  
Sivonen Kari  
Liski Mikko &  
Rope Johanna  
Sandman Helena  
Sandás Niklas &  
Auer Claudia  
Sarjakoski Outi &  
Taskinen Kaisu

STS  
Alitalo Simo  
Merenmies Elina  
Jämsä Arne  
Rantala Hannele  
Vuokola Marko

2005

ORNAMO  
Elo Susan  
Keskitalo Jukka  
Niinikoski Noora  
Renvall Saara  
Rinne Pia  
Viipola Irina

SAFA  
Asikainen Aila  
Bungers Ari  
Järvinen Ari  
Korpivaara Aila  
Koskinen Jouko  
Mansikka Ilona  
Pulkkinen Katri-Liisa

STS  
Aho Björn  
Baumgartner Stig  
van Ingen Sami  
Romo Heidi  
Sarje Kimmo  
Vainio Marjukka  
Ylikoski Maria

2006

ORNAMO  
Ervamaa Anna &  
Strömberg-Ertz Lena  
Meuronen Päivi &  
Katajamäki Aimo  
Salonen Anna  
Simonsson Kim  
Tonder Taru

SAFA  
Broner-Bauer Kaisa  
Ilonen Pia &  
Lukander Minna  
Jetsonen Sirkka-Liisa  
Meskanen Pihla

Murole Jussi  
Salonen Marja  
Vahtera Ulla

STS  
Jokiranta Rita  
Karjula Pasi  
Kuchka Heta &  
Lecklin Johanna  
Näsänen Elena &  
Sassi Pekka  
Sarola Leila  
Soinio Kari

2007

ORNAMO  
Damberg Mia &  
Rodas Patricia  
Dog Design  
(Sivula Eeva, Salmela  
Petri and Iltou Ilona)  
Ervamaa Anna  
Haavisto Riitta-Liisa &  
Anna-Riitta  
Jauhiainen Maria  
Peltokallio Leena &  
Manns Susanne  
Pinomaa Eeva

SAFA  
Grönlund Hannele  
Helander Henna-Maria  
Kangasvieri Janne  
Kaunio Marianne  
Oiva Vesa  
Ojanlatva Johanna & Veikko  
Pihjaniemi Janne &  
Ojala Henrika

STS  
Ala-Maunus Petri &  
Suoniemi Minna  
Liulia Marita  
Räisänen Janne  
Schakir Tülay

2008

ORNAMO  
Bello Paula &  
Oksanen Teemu  
Ilveskorpi Liisa  
Michelsson Kristiina  
Rantala Annika  
Rikala Mikko

SAFA  
Freese Simo  
Louekari Meri  
Kuitunen Ulla &  
Vuori Tuukka  
Siitonen Tuomas &  
Rope Jenni

STS  
Alitalo Simo  
Artists' Association of  
Finland (Arctic Hysteria  
exhibition group)  
Helasvuo Maija  
Hänninen Nanna  
Isomaa Eeva-Liisa  
Kiukkola Timo &  
Kuula Anni  
Oja Vesa  
Tukiainen Katja &  
Hagelberg Matti

2009

ORNAMO  
Arela Anni &  
Riihivainio Kalle  
Isoniemi Eliisa  
Makkonen Elina &  
Mustajärvi Timo  
Vatanen Sanna  
Vesmanen Esa &  
Kozári Hilda  
Winqvist Merja

SAFA  
Fleming Tuula  
Hintsanen Timo &  
Peltonen Kari  
Kalliala Martti  
Lodenius Staffan  
Ruskeepää Esa  
Uusitalo Marjatta

STS  
Heikinaho Minna  
Keränen Olli &  
Luutonen Maija  
Lenkkeri Ville  
Metso Juha

2010

ORNAMO  
Friman Tomi  
Järveläinen Laura  
Nenonen Marko  
Ollakka Hannele  
Syväuoma Sari  
Vainio Aino

SAFA  
Adlercreutz Anders  
Hautajärvi Harri  
Kolhonen Pasi  
Meriläinen Sanna  
Siven Kirsti &  
Takala Asko  
Toivonen Tuomas

STS  
Aho Heini

Korhonen Arto  
Luoma Niko  
Rannikko Vesa-Pekka  
& Takala Päivi  
Puha Tero  
Reinhard Aurora

2011

ORNAMO  
Fredriksson Leena &  
Riquelme Pablo  
Isopahkala Mari  
Martikainen Outi  
Palilo Daniel  
Suomela Sauli  
Vanhatapio Tiia

SAFA  
Anttila Maija  
Böök Netta  
Hernberg Hella  
Karlsso Kristiina  
& Koskinen Tonboe  
Pauliina (project team)  
Lautso Jenni  
Perko Tomi &  
Schakir Tülay (STS)  
Ylä-Anttila Kimmo

STS  
Heikkilä Jaakko  
van Ingen Juha  
Piilola Tamara &  
Hautamäki Jukka  
Soinio Kari  
Tamminen Anne



Photos / Martin Cox, Chikako Harada, Vesa Hinkola, Tuovi Hippeläinen, Olli Lehtinen, Marco Melander, Ulla Jokisalo, Ilya Popenko, Kari Soinio, Janne Suhonen, Tuomo Tammenpää, Jussi Tiainen, Kirsi Tiittanen, Tarja Tuppurainen, Erkki Valli-Jaakola, Riika Vepsä-Tapper, Gustav Welin, Christine Yogiama

Layout / Aimo Katajamäki & Mika Kettunen

Printed by Painorauma Oy, 2011



21



Finnish Cultural Institute  
in New York

**Finnish Cultural Institute in New York**

799 Broadway, Suite 520  
New York, NY 10003  
the United States

E-mail: [info@fcultureny.org](mailto:info@fcultureny.org)  
Telephone: +1-212-674-5570  
Fax: +1-212-674-5614

**Suomen New Yorkin kulttuuri-instituutin säätiö**

Iso Roobertinkatu 3-5 A 22  
00120 Helsinki  
Finland

E-mail: [newyork@artists.fi](mailto:newyork@artists.fi)  
Telephone: +358-9-6221414  
Fax: +358-9-2724006

[www.fcultureny.org](http://www.fcultureny.org)